



日本

MY JAPAN GUIDE

YOUR JAPAN TRAVEL SPECIALISTS

JAPAN

日本



京都
KYOTO

神戸
KOBE

広島
HIROSHIMA

奈良
NARA

大阪
OSAKA

Table of Contents

Kanto Region

Tokyo 8

Our tours 10

Kansai Region

Kyoto 13

Our tours 15

Other Cities 18

Art Tours 18

Why Us ? 18

JAPAN

SAKURA

Japan was settled about 35,000 years ago by Paleolithic people from the Asian mainland. At the end of the last Ice Age, about 10,000 years ago, a culture called the Jomon developed. Jomon hunter-gatherers fashioned fur clothing, wooden houses, and elaborate clay vessels. According to DNA analysis, the Ainu people may be descendants of the Jomon.

The second wave of settlement by the Yayoi people introduced metal-working, rice cultivation, and weaving to Japan. DNA evidence suggests that these settlers came from Korea.

The first era of recorded history in Japan is the Kofun (A.D. 250-538), which was characterized by large burial mounds or tumuli. The Kofun were headed by a class of aristocratic warlords; they adopted many Chinese customs and innovations.

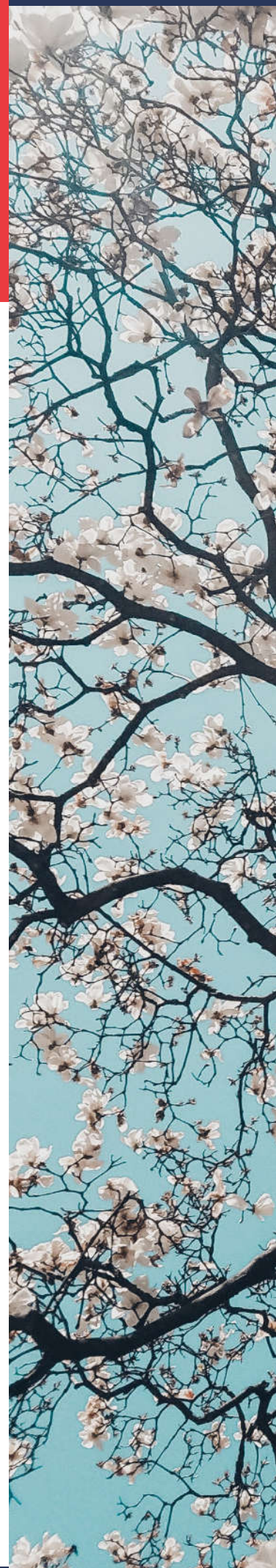
Buddhism came to Japan during the Asuka period, 538-710, as did the Chinese writing system. At this time, society was divided into clans. The first strong central government developed during the Nara period (710-794). The aristocratic class practiced Buddhism and Chinese calligraphy, while agricultural villagers followed Shintoism. Japan's unique culture developed rapidly during the Heian

Samurai lords, called "shogun," took power in 1185, and ruled Japan in the name of the emperor until 1868. The Kamakura Shogunate (1185-1333) ruled much of Japan from Kyoto. Aided by two typhoons, the Kamakura repelled attacks by Mongol armadas in 1274 and 1281.

A strong emperor, Go-Daigo, tried to overthrow the shogunate in 1331, resulting in a civil war that finally ended in 1392. During this time, a class of strong regional lords called "daimyo" increased in power; their rule lasted through the end of the Edo period, also known as the Tokugawa Shogunate, in 1868. That year, a new constitutional monarchy was established, headed by the Meiji Emperor. The power of the shoguns came to an end.

After the Meiji Emperor's death, the emperor's son became the Taisho Emperor. His chronic illnesses kept him away from his duties and allowed the country's legislature to introduce new democratic reforms. During World War I, Japan formalized its rule over Korea and seized control of northern China.

The Showa Emperor, Hirohito, oversaw Japan's aggressive expansion during World War II, its surrender, and its rebirth as a modern, industrialized nation.





KANTO REGION



東京
TOKYO

TOKYO



THE HARMONY OF MODERNITY AND TRADITION

Tokyo (東京) is a huge, wealthy and fascinating metropolis which brings high-tech visions of the future side by side with glimpses of old Japan, and has something for everyone.

Most visitors to Tokyo will visit the most well-known sights – Asakusa, Shinjuku, Shibuya, Harajuku and the Meiji Shrine. These are all of course worth visiting, but Tokyo also offer a multitude of choices for travelers looking for a less touristy and typical Japanese experience.

The real charm of Tokyo is more discreet. We can discover it in the maze of streets behind the main one, with a village atmosphere, miles away from urban life. It is warm and simple, full of nice shops with clean design as well as charming cafes and small bars...

DISCOVER TOKYO

Our local experts can attest, straying off the beaten tourist path is the best way to get a once-in-a-lifetime experience in Tokyo.

At least 2 full days are needed to get a taste of Tokyo.

Highlights...

Tsukiji Fish Market / The Imperial Palace East Garden / Asakusa / Akihabara / Shinjuku / Aoyama-Shibuya-Harajuku

From JPY 16,000/pers.

EXCLUSIVE & THEME TOURS



Fish & Soul: Insider Tour at Toyosu Fish Market

With our chef you will have the unique chance to enter the Toyosu (豊洲) market floor where only buyers are allowed into and get lost in the labyrinth of seafood stalls, do your shopping and choose the best ingredients for your lunch at the chef's hidden restaurant.
From JPY 27,500/pers. - 05h



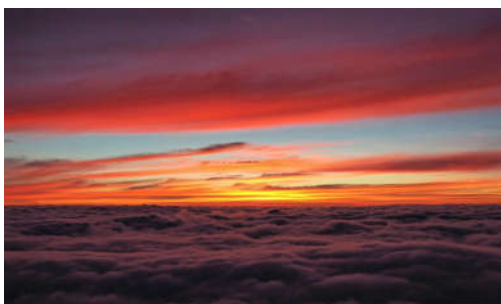
Rikishi Insider: Sumo morning training tour

Join us to visit a sumo stable or beya, where rishiki (力士) live, eat, sleep and train throughout their career. Then enjoy Chanko-nabe, a rich and filling stew with vegetables, tofu, cabbage ...mixed with seafood, chicken, pork or beef, commonly eaten in vast quantity by rishiki.
From JPY 24,000/pers. - 05h



Nostalgic and Old Tokyo: The secrets of YaNeSen

Yanesen (谷根千) is one of the most picturesque neighborhoods, nicknamed the "old Tokyo". Join us for a tea ceremony and a long stroll in the heart of this an unspoiled, traditional urban quarter; a preserved district in the center of the Tokyo metropolis.
From JPY 18,000/pers. - 04h



Climbing Mount Fuji: The Pilgrimage in the sky

Since ancient times, pilgrims carrying a long stick began to climb Mount Fuji (富士山) from the bottom of the mountain to reach the crater at its summit. Join us for memorable tour experience, with breathtaking views and cultural insights from a local perspective.
From JPY52,000/pers. - 08h

KANTO REGION

OUR TOURS



Kamakura: The Capital of Zen and Samurai Spirit

Kamakura (鎌倉) is a charming and bustling coastal town, about an hour's train ride from Tokyo. Famous for its temples and literary heritage, Kamakura was the political center of Japan's first feudal government, known as bakufu.

From JPY 31,000/pers. - 08h



Hakone: Onsen under the shadow of Mount Fuji

The city of Hakone (箱根) is a very popular destination among Tokyoites and one of Japan's most popular hot spring resorts. Famous for its outdoor activities, art museums, natural beauty and breathtaking views of Mount Fuji.

From JPY 28,000/pers. - 10h



Mount Fuji: Sacred place and icon of Japan

Mount Fuji (富士山) rising above the clouds, is the symbol of Japan and has provided a spiritual basis for the Japanese since ancient times. This almost perfectly shaped volcano is one of the most popular and iconic Japanese sites.

From JPY 32,500/pers. - 10h



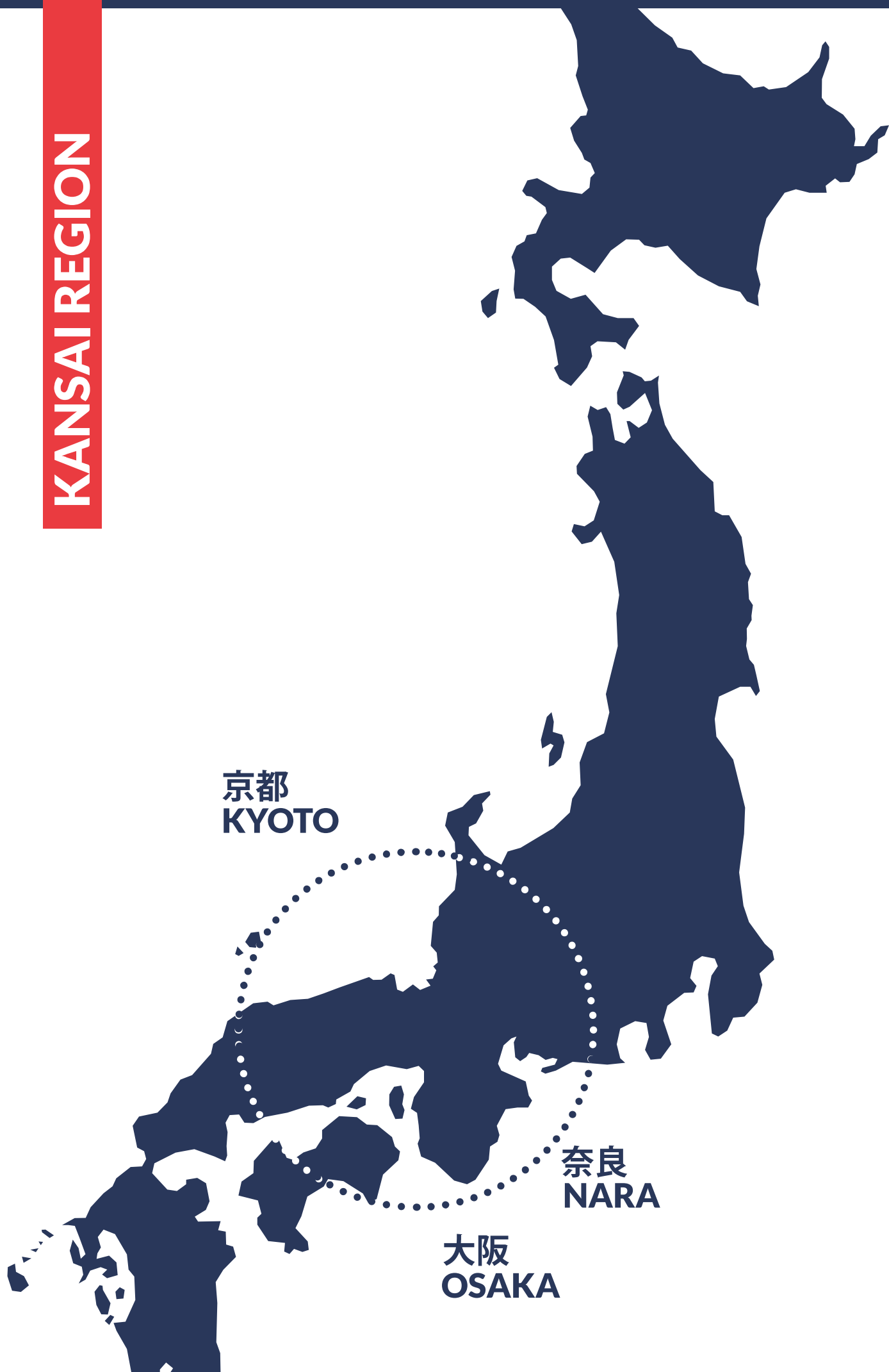
Nikko: The Jewel tucked in the Japanese Alps

Nikko wo minakereba “kekko” to iu na. as “Don't say ‘magnificent’ until you've seen Nikko”.

Under the canopy of the majestic old cedar trees alies the town of Nikko (日光), best known for the World Heritage Shrines and Temples it shelters.

From JPY 32,500/pers. - 10h

KANSAI REGION



京都
KYOTO

奈良
NARA

大阪
OSAKA

KYOTO



HERITAGE AND TRADITION

Kyoto (京都) was the capital of Japan for over a millennium, and has the reputation of being its most beautiful city. However, visitors may be surprised by how much work they will have to do to see Kyoto's beautiful side. The first impressions will be of the urban sprawl of central Kyoto, around the ultra-modern glass-and-steel train station, which is itself an example of a city steeped in tradition colliding with the modern world.

Unlike Tokyo, Kyoto was able to keep the customs and traditions of the Old Japan, as it was spared from the bombing of the Second World War and was never affected by earthquakes and other natural disasters.

DISCOVER KYOTO

Nonetheless, the persistent visitor will soon discover Kyoto's hidden beauty in the temples and parks which ring the city center, and find that the city has much more to offer than immediately meets the eye.

At least 2 full days are needed to get a taste of Kyoto.

Highlights...

Kinkakuji temple (golden pavilion) / Sanjusangen-do / Kiyomizu-dera / Arashimaya / Fushimi Inari-taisha / Nijo Castle /

And of course Gion and Pontocho lane where you may meet Geisha.

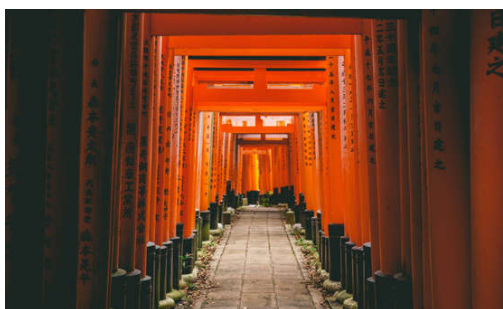
From JPY 16,000/pers.

EXCLUSIVE & THEME TOURS



Behind the Sliding Door: Dinner with Geisha

In a Machiya, a traditional wooden townhouses of Kyoto, experience the true, authentic taste of traditional Japan with a private Kaiseki Dinner with Geisha (芸者). Grab this once-in-a-lifetime opportunity to see their mesmerising performances in person.
From JPY 50,000/pers. - 03h



Fushimi Inari: Portals to Spiritual Journey and Sake

Escape the city and explore some off-the-beaten-path areas for a more relaxing pace, including Fushimi, the part of the city famous for the Fushimi Inari Taisha (伏見稲荷大社) renowned for its estimated one thousand vermilion torii gates and its sake production.
From JPY 21,000/pers. - 05h



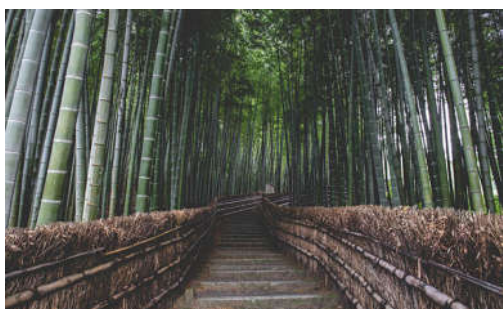
Kyoto Gardens: Japanese tradition of landscape

The gardens of Japan are worldwide renowned as being some of the most beautiful and Kyoto once the imperial capital of Japan is where the country's finest gardens are to be found, that you will discover with this Kyoto Gardens Tour.
From JPY 34,000/pers. - 08h



Kinukake: Draped silk and Heritage

Kinukake-no-michi (きぬかけの路) is a scenic and historic road that runs along the foothills of northwestern Kyoto, where you will discover three UNESCO World Heritage Sites, Kinkakuji (Golden Pavilion Temple), Ryoanji and Ninnaji.
From JPY 32,000/pers. - 05h



Arashiyama: Nature and Spiritual Hideaway

Arashiyama (嵐山) located in the western part of Kyoto, has a long and honorable history dating back to the Heian Period (794-1185), when nobles would enjoy its natural setting. It is home to beautiful temples and the famous Bamboo Grove.
From JPY 32,000/pers. - 08h

KANSAI REGION

OUR TOURS



Mount Hiei: The Marathon Monks of Hieizan

Mount Hiei (比叡山) or Hieizan, is a sacred mountain sheltering a complex of Buddhist temples of the Tendai sect. Immerse yourself in the story of warrior monks, a military force that once controlled the entire Kyoto region.

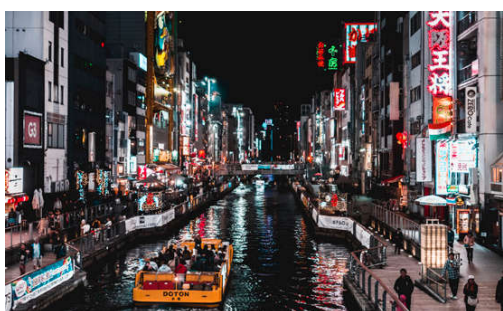
From JPY 32,000/pers. - 08h



Nara: The Sacred Deer City

Nara (奈良) was in the 8th century the first fixed capital of Japan, under the name of Heijo-kyo (平城京). Often overshadowed by its famous neighbor Kyoto, it still has a huge cultural heritage and is home to some of the oldest temples in Japan.

From JPY 31,000/pers. - 08h



Osaka: The Kitchen of the Empire

Many travelers underestimate Japan's second city, Osaka (大阪). This is nevertheless the capital of Japanese cuisine and a city for gourmets which is proud of its reputation as kuidaore (to ruin oneself by extravagance in food).

From JPY 19,000/pers. - 04h



Himeji Private Tour: The White Heron Castle

Himeji (姫路) is home to a castle that is perhaps the most beautiful in Japan. Built in the late 1500s, it was the largest in all of Asia. The city has been featured in a series of Japanese and foreign films, including the James Bond movie "You Only Live Twice" (1967).

From JPY 31,000/pers. - 08h



Mount Koya: Japan's Holiest Mountain

Center of Shingon Buddhism, Mount Koya (高野山), also called Koya-san, is one of Japan's most sacred mountains. Koya-san is a renowned Buddhist pilgrimage site and the best place in Japan to spend a night in a shukubo (temple lodging).

From JPY 35,000/pers. - 08h

OTHER CITIES



Hiroshima and Miyajima: Find your peace of mind

Hiroshima (広島) was founded in 1589 by the feudal lord Terumoto Mori. He built Hiroshima Castle to take advantage of its pivotal geographical location and the proximity of Miyajima Island and its shrine on the water, Itsukushima.

From JPY 34,000/pers. - 08h



Kanazawa: Where Edo Culture Lives On

Kanazawa (金沢市) is one of the overlooked jewels of Japanese tourism. It's a relatively remote location, off the beaten track, but it's packed with first-rate sights, including one of the country's best gardens, some and several beautifully preserved neighborhoods.

From JPY 34,000/pers. - 08h



Takayama: The Little Kyoto

If you're looking for a thoroughly old and authentic traditional Japanese village, traveling to the city of Takayama (高山)— called "Little Kyoto" for its antiquity and refined wooden buildings, some of them built by the same artisans who helped build old Kyoto.

From JPY 34,000/pers. - 08h



Ise Shima: The Land of Jingu and the Gods

Ise-Shima (伊勢志摩) region, also called the Shima Peninsula is primarily known for the eponymous Ise Shrine, arguably the holiest and most important Shinto site and the reputed home of the Emperor's Sacred Mirror.

From JPY 34,000/pers. - 08h

ART

THE INLAND SEA SETOUCHI



Naoshima: The Surreal Japan Art Island

Naoshima (直島), a remote island in the Seto Inland Sea, has garnered a reputation as the prime destination for art devotees. With an art expert explore highlights of the island, wandering through museums showcasing all kind of arts from local artists.

From JPY 34,000/pers. - 08h



Seto Inland Sea: Yachting Japan's Art Islands

The Seto Inland Sea (瀬戸内海) is considered Japan's most charming waterway, often compared with the Mediterranean Sea. Embark on an extraordinary and exclusive art tour to encounter the life and culture treasured by the local people of Japan's Setouchi region.

From JPY 34,000/pers. - 08h

EXPERIENCES



Gourmet and Tastes Of Japan

Of the Japanese cuisine *nihon ryōri* (日本料理) or *washoku* (和食), we mainly know sushi, yakitori and sashimi... But it is not limited to this, far from it. Accompanied traditionally with green tea or sake ... and sometimes wine, Japanese cuisine is recognized for its extreme refinement and you will discover with us..

Izakaya, Japanese pub – casual place for after-work drinking. A quintessential Japan experience and a wonderful way to spend the evening with local specialty dishes and sake.

Kaiseki, the Japanese “Haute Cuisine” – Consisting of a succession of dishes, the artistic work of Japanese cuisine where perfection is found in every little detail.

Katsunuma - Its vineyards & Koshu tasting, with our wine expert, we offer a day in the region of Katsunuma, Japan's most prestigious wine region.



Cultural Experiences

Japanese has its own unique tradition and culture. Bring some tradition to your Japanese holiday with authentic cultural experiences.

Introduction to Chanoyu (茶の湯), tea ceremony: Japanese tea ceremony gives you insight into both the art and philosophy of Japan.



Wagashi (和菓子), Japanese confectionery: The art of wagashi is said to embody the Japanese spirit, as well as the Japanese cultural value placed on the four seasons.

Japanese papers Washi (和紙) making: Said to be the best gift which nature had endowed the Japanese.

Japanese calligraphy Shodo (書道): “the way of artistic hand writing or beautiful writing”, the oldest and most profound traditional art forms in Japan.



Kintsugi (金継ぎ): an ancient Japanese practice that beautifies broken pottery. The Japanese art principle that teaches how to work with failure.

Kitsuke (着付) or the art of wearing a kimono: Which properly depends as much on the person's inner nature as on the garment itself.



Furoshiki (風呂敷): the perfect way to convey thoughtfulness and courtesy through the care taken in the choice of wrapping and in the way the fabric is folded and tied.

Introduction to Zazen (座禅): More than a religion or a philosophy, Zen is a radical approach that has colored the Japanese way of life with a touch of absolute.



MY JAPAN GUIDE

How to plan your trip with us?

You've decided to visit Japan — begin your travel planning right here! This may be a once in a lifetime experience, so you will want to make it count and you'll appreciate the time saved with us. After determining together a global overview of the places you want to visit, we will suggest and recommend a customized tour.

There are so many wonderful places to visit and discover in this fabulous Country!

We are here to assist you in creating Your Very Own Custom Designed Tour!

Why Us?

Love

Our tours grew out of a love for the area in which our guides live, who desire to pass their passion on to others by showing the real Japan – from a locals perspective.

Unique

We offer unique and original Japan walking tours, our guides will take you into the heart of vibrant Japan to explore where traditional and modern culture coexist in unity.

Specialist

All of our guides live locally and have inside knowledge and passion for the areas you will visit. All of this makes for an unforgettable Japan experience for both visitors and locals alike.

CUSTOMER SERVICE

+81(0)3-6383-3252

info@myjapanguide.com
<https://myjapanguide.com/>

